

Inpirstar Profile Editor 2.8 Quick Guide



INSPIRSTAR INC.

Inspirstar Inc. Copyright

1

Contents

- **What is New in v2.8**
- **Installation**
- **Basic Terminology and Concepts**
- **Import Existing Protocols**
- **Create New Protocols**
- **Save a Profile**
- **Write a Profile to Inspirstar IS02 PMS™* Unit**
- **Read a Profile to Inspirstar IS02 PMS™* Unit**
- **Print Profile**
- **Change IS02 Settings**
- **Real Time Control Panel**
- **Support**



PMS™ Inspirstar Programmable Microcurrent Stimulator

INSPIRSTAR INC.

Inspirstar Inc. Copyright

2

What is New in v2.8

☆ **Support of 10-Protocol in IS02BA**

☆ **“Change IS02 Settings” to enable or disable some features in IS02BA**

☆ **Improved Real Time Control Panel.**



INSPIRSTAR INC.

Inspirstar Inc. Copyright

3

Installation

☆ **Install Inspirstar Profile Editor Software**

☆ Run the file setup.exe in the root directory of the CD-ROM

☆ **Install USB Driver (only for new users)**

☆ Start ->All Programs ->Inspirstar->USB Driver Installer

☆ **Connect Inspirstar IS02 PMS unit to PC**

☆ Plug Inspirstar USB Adaptor into a USB port of PC.

☆ Connect USB Adaptor to IS02 unit.

☆ Put batteries into IS02 unit.



INSPIRSTAR INC.

Inspirstar Inc. Copyright

4

Basic Terminology and Concepts

☆ Frequency Pair

- ☆ Each frequency pair defines the microcurrent parameters of the output of two channels.

☆ Protocol

- ☆ A therapy protocol is usually used to treat one symptom.
- ☆ Each protocol holds one or more frequency pairs.



INSPIRSTAR INC.

Inspirstar Inc. Copyright

5

Basic Terminology and Concepts – cont'd

☆ Profile

- ☆ A Profile holds multiple therapy protocols. *
- ☆ A user profile is usually used for a patient or a typical usage. Each patient may have a different profile.

* IS02BA units support up to 10 protocols, although the software can support more than 10 protocols. If a profile having more than 10 protocols is written into the unit, only the first 10 protocols can be run.



INSPIRSTAR INC.

Inspirstar Inc. Copyright

6

Import Existing Protocols

☆ **Start Profile Editor**

☆ Start->All Programs->Inspirstar->Inspirstar Profile Editor.
The first window is Profile window.

☆ **Import a protocol from existing protocol library if you have**

☆ Use buttons “Import” and select a protocol from existing protocols.



☆ **Import protocols.**
(up to 10 protocols)

List of Protocols:

Protocol Operations: Add New Import Export Remove Edit Move Up

Line	Protocol Name	Total Time	I(uA)	Beep	Description
1*	ARMD and nicotice abuse	40'	40	<input checked="" type="checkbox"/>	
2*	ARMD Dry and Cataracts	45'	40	<input checked="" type="checkbox"/>	ARMD dry and cataracts
3*	ARMD Dry and Dry Eyes	58'	40	<input checked="" type="checkbox"/>	
4*	ARMD Dry	38'	40	<input checked="" type="checkbox"/>	
5*	ARMD wet and detox	54'	40	<input checked="" type="checkbox"/>	
Total		235'		<input checked="" type="checkbox"/>	Summary of this profile.



Inspirstar Inc. Copyright

7

Create New Protocols

☆ **Start a new protocol**

☆ When the cursor is on a protocol, click “Edit” to start a new protocol. This is Protocol Window.

List of Protocols:

Protocol Operations: Add New Import Export Remove Edit

Line	Protocol Name	Total Time	I(uA)	Beep	Description
1	Protocol 1	0'	0	<input checked="" type="checkbox"/>	
2	Protocol 2	0'	0	<input checked="" type="checkbox"/>	

☆ **In the opened window, edit Frequency Pairs for this Protocols.**

Protocol 1 in unfilled.profile* - Inspirstar Protocol Editor

Protocol Information
Therapy time: 28' Description: this protocol is for ...

List of Frequency Pairs: (3 pairs)

Add Remove Move Up Move Down Show Parameter Editing Panel Global Change ...

Pair #	F1(Hz)	F2(Hz)	I(uA)	T(min/sec)	Period(ms)	K0	K1	K2	K3	Polarity	Phase	Description
1*	123	56	100	5'	2,600	5	20	75	0	Alternative	0	
2*	45	986	100	15'	2,600	5	20	75	0	Alternative	0	
3*	5.9	2	100	8'	2,600	5	20	75	0	Alternative	0	
new												



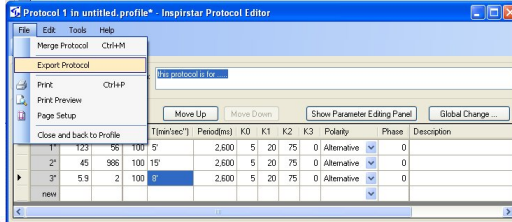
Inspirstar Inc. Copyright

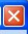
8

Create New Protocols – cont'd

☆ **When the editing of a protocol is finished,**

- ☆ You may want to save this protocol to a protocol file for future use by clicking “File -> Export Protocol”. In this way, you can build your protocol library.



- ☆ You can click  or click “File->Close and back to Profile” to go back Profile window. Note that you won't lose any protocol information by close this window.



INSPIRSTAR INC.

Inspirstar Inc. Copyright

9

Save a Profile

☆ **In the Profile Window, save this profile which includes multiple protocols into a profile file on your computer.**

- ☆ File -> Save Profile As

☆ **Profile Methodology**

- ☆ Save a different profile anytime before you re-program a unit. In this way, you can keep all records.

☆ Profile name examples

- ☆ PatientName_Date.profile. Example: John_May10_2008.profile

- ☆ Usage_Date.profile. Example: OfficeUnit2_Jun6_2008.profile




INSPIRSTAR INC.

Inspirstar Inc. Copyright

10

Write a Profile to IS02 PMS unit

☆ **When a profile is edited or an existing profile is open**

☆ Use the button “Write” to write into the unit. 

☆ **Use Password to protect your profile, preventing other people from reading the profile.**

Password:

☆ **Make sure USB adaptor is connected properly.**

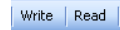
☆ **Click the button “Write” again to finish the operation.**

Note: Anytime when the “Write” operation is executed, all protocols in this profile are written into the unit and all existing protocols in the unit are replaced.



Read a Profile from IS02 PMS unit

☆ **Use the button “Read” to read the profile from the unit.**



☆ Use “Read” operation to verify that “Write” operation has been done correctly.

☆ Another purpose of “Read” operation is to modify the profile inside the unit and write back to the unit. (Don’t forget to save a new profile on your computer before you write back, for your record.)



Print a Profile

☆ You can print a profile for office record.

☆ In Profile Main Window, Click “File -> Print”.

☆ This will print all protocols of this profile, each protocol in one table.



INSPIRSTAR INC.

Inspirstar Inc. Copyright

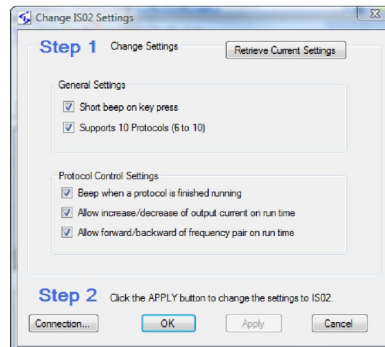
13

Change IS02 Settings

☆ You can change some control settings of IS02BA unit

☆ In Profile Main Window, Click “Tools -> Change IS02 Settings”.

☆ Connect to IS02BA, Change settings and then Click “Apply”.



INSPIRSTAR INC.

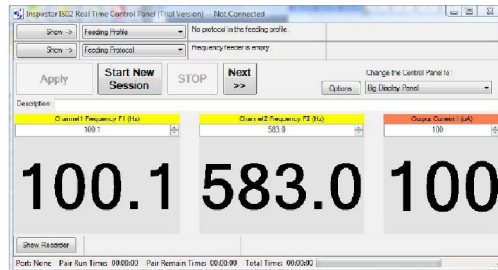
Inspirstar Inc. Copyright

14

Real Time Control Panel*

- ☆ With this feature, you can treat patients in real time mode. When you click the frequencies and current on the screen, the changes are applied on patients immediately.

☆Click “Tools -> Real Time Control Panel”



*This feature is not enabled by default. You need to contact Inspirstar to enable it.



INSPIRSTAR INC.

Inspirstar Inc. Copyright

15

Support

- ☆ This is a quick guide for Profile Editor 2.8. For detailed operations, please refer to the documents *Inspirstar Profile Editor User Guide* and *Inspirstar IS02BA User's Manual*. These documents are installed on your computer. You can access them by clicking your computer "Start"-> "All Programs" -> "Inspirstar" -> "Documents".

Please contact Inspirstar for any question.

Inspirstar Inc.
Phone: 480-634-8708 or 1-866-643-0180
Fax: 480-634-8982
Email: support@inspirstar.com

Thank you!



INSPIRSTAR INC.

Inspirstar Inc. Copyright

16