

Inspirstar Profile Editor 4.0

Quick Guide

Basic Operations

Contents

- **Installation**
- **Basic Terminology and Concepts**
- **Import Existing Protocols**
- **Create New Protocols**
- **Save a Profile**
- **Write a Profile to Inspirstar IS02 PMS™* Unit**
- **Read a Profile to Inspirstar IS02 PMS™* Unit**
- **Print Profile**
- **Firmware Upgrade**
- **Change IS02 Settings**
- **Support**

*PMS™: Inspirstar Programmable Microcurrent Stimulator

Installation to use IS02LCD/PRO

★ Install Inspirstar Profile Editor Software

★ Download and run www.inspirstar.com/SoftwareUpdate/IS02/Latest/IS02setup.exe

★ Register Software license

★ Open software, click Help->Register License. Contact Inspirstar to get license key.

★ Install USB Driver (No need for Windows 8/10)

★ Start ->All Programs ->Inspirstar->USB Driver Installer

★ Connect Inspirstar IS02LCD/PRO unit to PC

★ Plug microUSB cable into a USB port of PC.

★ Connect this microUSB cable to IS02LCD/PRO unit.

★ Put batteries into IS02 unit.



Installation to use IS02BA

★ Install Inspirstar Profile Editor Software

★ Download and run www.inspirstar.com/SoftwareUpdate/IS02/Latest/IS02setup.exe

★ Register Software license

★ Open software, click Help->Register License. Contact Inspirstar to get license key.

★ Install USB Driver (No need for Windows 8/10)

★ Start ->All Programs ->Inspirstar->USB Driver Installer

★ Connect Inspirstar IS02BAunit to PC

★ Plug Inspirstar USB Adaptor into a USB port of PC.

★ Connect USB Adaptor to IS02 unit.

★ Put batteries into IS02 unit.



Basic Terminology and Concepts

★ Frequency Pair

★ Each frequency pair defines the microcurrent parameters of the output of two channels.

★ Protocol

★ A therapy protocol is usually used to treat one symptom.

★ Each protocol holds one or more frequency pairs.



Basic Terminology and Concepts – cont'd

★ Profile

★ A Profile holds multiple therapy protocols. *

★ A user profile is usually used for a patient or a typical usage. Each patient may have a different profile.

* IS02BA units support up to 10 protocols, although the software can support more than 10 protocols. If a profile having more than 10 protocols is written into the unit, only the first 10 protocols can be run. Similarly, only the first 99 protocols of a profile can be run in a IS02LCD unit and only the first 999 protocols of a profile can be run in a IS02PRO unit.



Import Existing Protocols

☆ Start Profile Editor

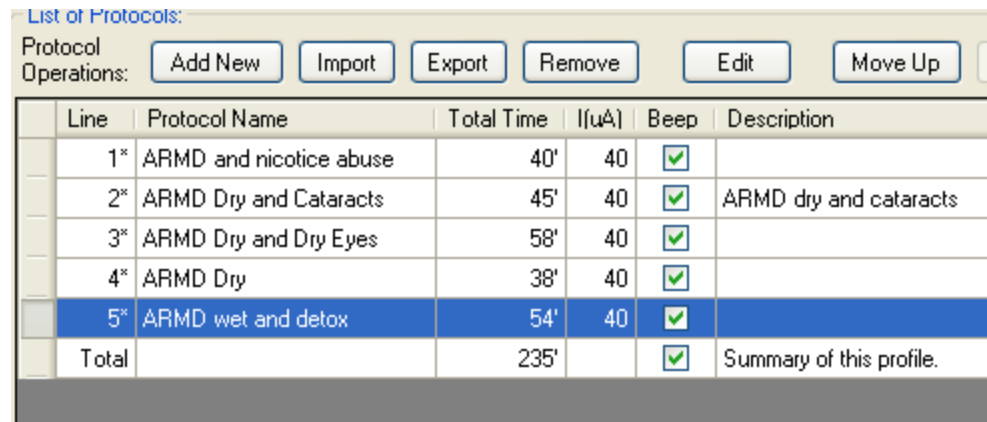
☆ Start->All Programs->Inspirstar->Inspirstar Profile Editor.
The first window is Profile window.

☆ Import a protocol from existing protocol library if you have

☆ Use buttons “Import” and select a protocol from existing protocols.



☆ Import protocols.



A screenshot of a software dialog box titled "List of Protocols:". Below the title, there are five buttons: "Add New", "Import", "Export", "Remove", "Edit", and "Move Up". Below the buttons is a table with the following data:

Line	Protocol Name	Total Time	I(μA)	Beep	Description
1*	ARMD and nicotice abuse	40'	40	<input checked="" type="checkbox"/>	
2*	ARMD Dry and Cataracts	45'	40	<input checked="" type="checkbox"/>	ARMD dry and cataracts
3*	ARMD Dry and Dry Eyes	58'	40	<input checked="" type="checkbox"/>	
4*	ARMD Dry	38'	40	<input checked="" type="checkbox"/>	
5*	ARMD wet and detox	54'	40	<input checked="" type="checkbox"/>	
Total		235'		<input checked="" type="checkbox"/>	Summary of this profile.

Create New Protocols

☆ Start a new protocol

☆ When the cursor is on a protocol, click “Edit” to start a new protocol. This is Protocol Window.

List of Protocols:

Protocol Operations:

Line	Protocol Name	Total Time	I(μA)	Beep	Description
1	Protocol 1	0'	0	<input checked="" type="checkbox"/>	
2	Protocol 2	0'	0	<input checked="" type="checkbox"/>	

☆ In the opened window, edit Frequency Pairs for this Protocols.

Protocol 1 in untitled.profile* - Inspirstar Protocol Editor

File Edit Tools Help

Protocol Information
Therapy time: 28' Description: this protocol is for]

List of Frequency Pairs: (3 pairs)

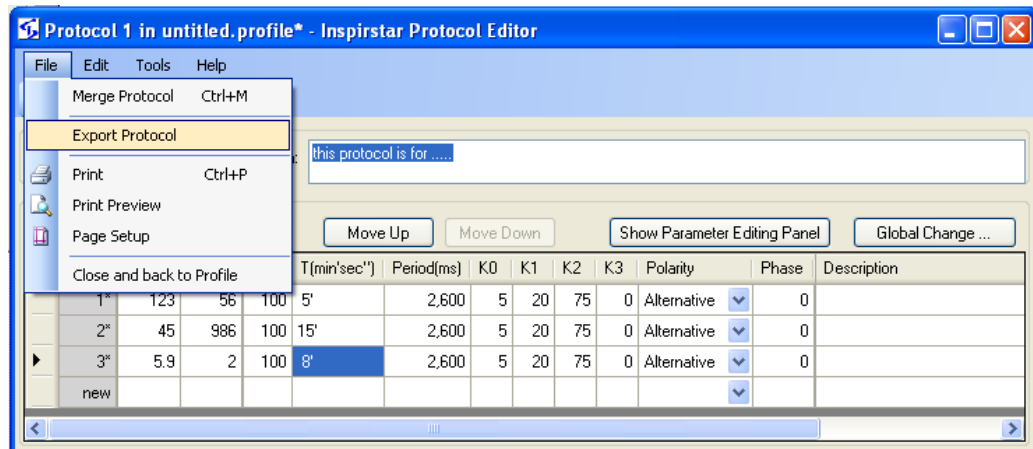
Pair #	F1(Hz)	F2(Hz)	I(μA)	T(min'sec'')	Period(ms)	K0	K1	K2	K3	Polarity	Phase	Description
1*	123	56	100	5'	2,600	5	20	75	0	Alternative	0	
2*	45	986	100	15'	2,600	5	20	75	0	Alternative	0	
▶ 3*	5.9	2	100	8'	2,600	5	20	75	0	Alternative	0	
new												




Create New Protocols – cont'd

☆ **When the editing of a protocol is finished,**

☆ You may want to save this protocol to a protocol file for future use by clicking “File -> Export Protocol”. In this way, you can build your protocol library.



☆ You can click  or click “File->Close and back to Profile” to go back Profile window. Note that you won't lose any protocol information by close this window.



Save a Profile

★ **In the Profile Window, save this profile which includes multiple protocols into a profile file on your computer.**

★ File -> Save Profile As

★ **Profile Methodology**

★ Save a different profile anytime before you re-program a unit. In this way, you can keep all records.

★ Profile name examples

★ PatientName_Date.profile. Example: John_May10_2008.profile

★ Usage_Date.profile. Example: OfficeUnit2_Jun6_2008.profile



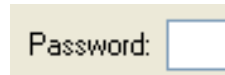
Write a Profile to IS02 PMS unit

☆ **When a profile is edited or an existing profile is open**

☆ Use the button “Write” to write into the unit.



☆ **Use Password to protect your profile, preventing other people from reading the profile.**



☆ **Make sure USB adaptor is connected properly.**

☆ **Click the button “Write” again to finish the operation.**

Note: Anytime when the “Write” operation is executed, all existing protocols in the unit will be deleted, then all protocols in this profile are written into the unit.



Read a Profile from IS02 PMS unit

☆ Use the button “Read” to read the profile from the unit.



- ☆ Use “Read” operation to verify that “Write” operation has been done correctly.
- ☆ Another purpose of “Read” operation is to modify the profile inside the unit and write back to the unit. (Don’t forget to save a new profile on your computer before you write back, for your record.)

Print a Profile

★ **You can print a profile for office record.**

★ In Profile Main Window, Click “File -> Print”.

★ This will print all protocols of this profile, each protocol in one table.

Firmware Upgrade

★ You can upgrade firmware of units

- ★ Connect the unit to PC, click Tools->Product Information. If available firmware in this software version is newer than the firmware in the unit, firmware upgrade message will popup automatically.
- ★ Another method is manual firmware upgrade. Click Tools->Firmware Upgrade. Click “Browse”, select the proper firmware file and click “Open”. Then click “Start Upgrade” to upgrade firmware.

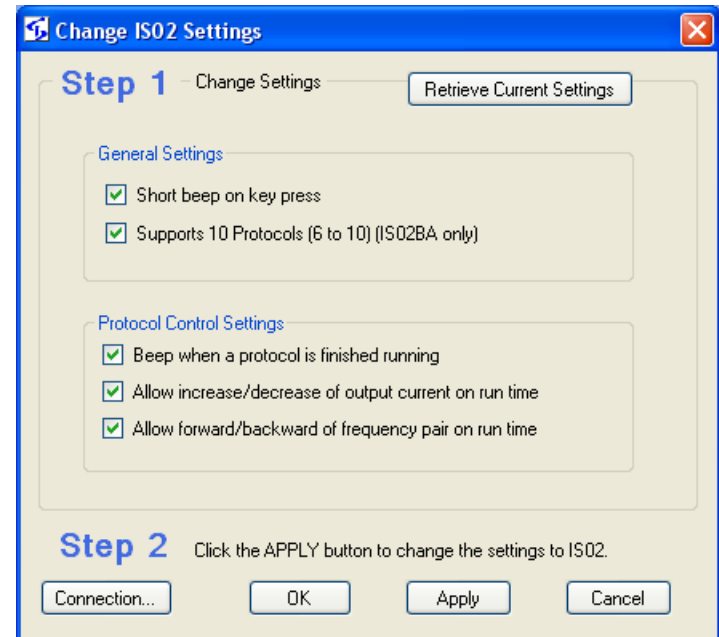


Change IS02 Settings

☆ You can change some control settings of units

☆ In Profile Main Window, Click “Tools -> Change IS02 Settings”.

☆ Connect to IS02, Change settings and then Click “Apply”.
(Some settings may not be valid for some models.)



Support

☆ This is a quick guide for Profile Editor 4.0. For detailed operations, please refer to the documents *Inspirstar Profile Editor User Guide* and *Inspirstar IS02BA/IS02LCD/IS02PRO User's Manual*. These documents are installed on your computer. You can access them by clicking your computer "Start"-> "All Programs" -> "Inspirstar" -> "Documents".

Please contact Inspirstar for any question.

Inspirstar Inc.

Phone: 480-634-8708 or 1-866-643-0180

Fax: 480-634-8982

Email: support@inspirstar.com

Thank you!

